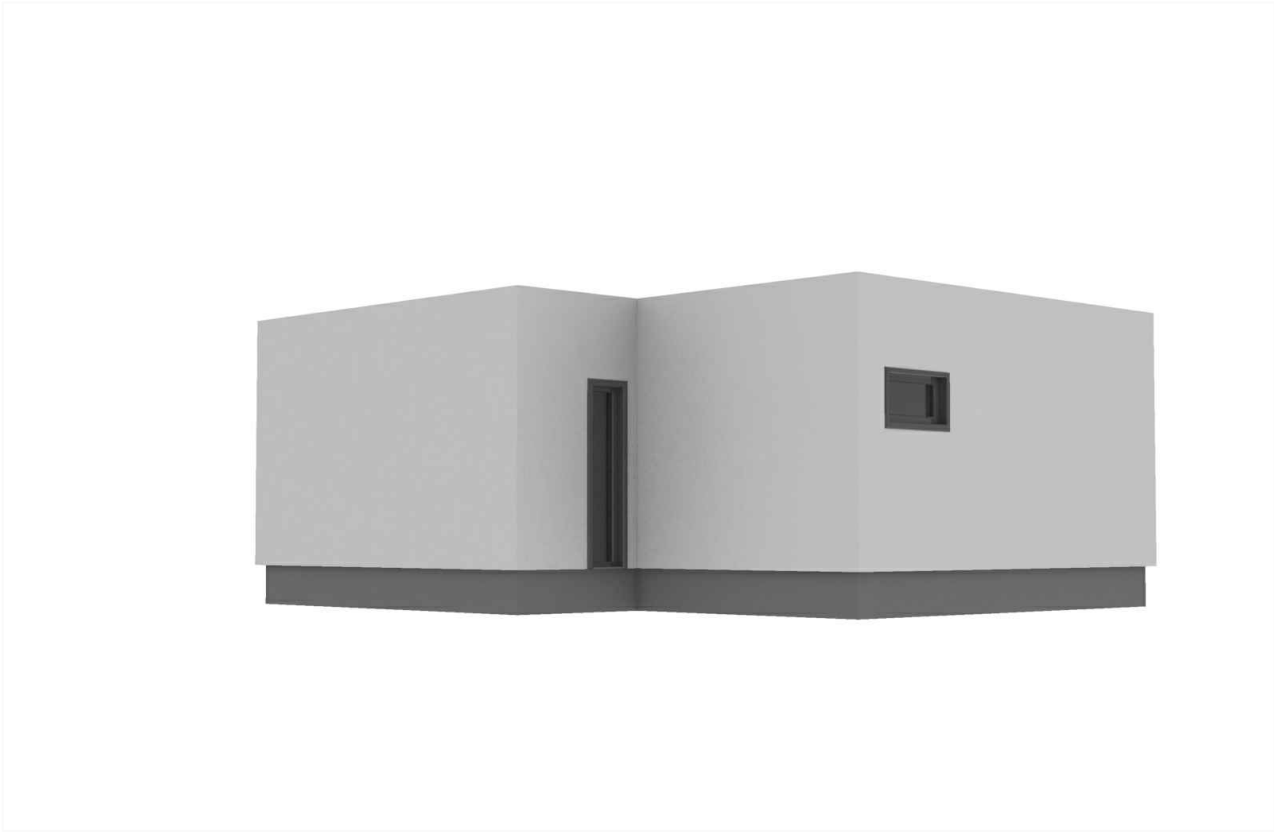
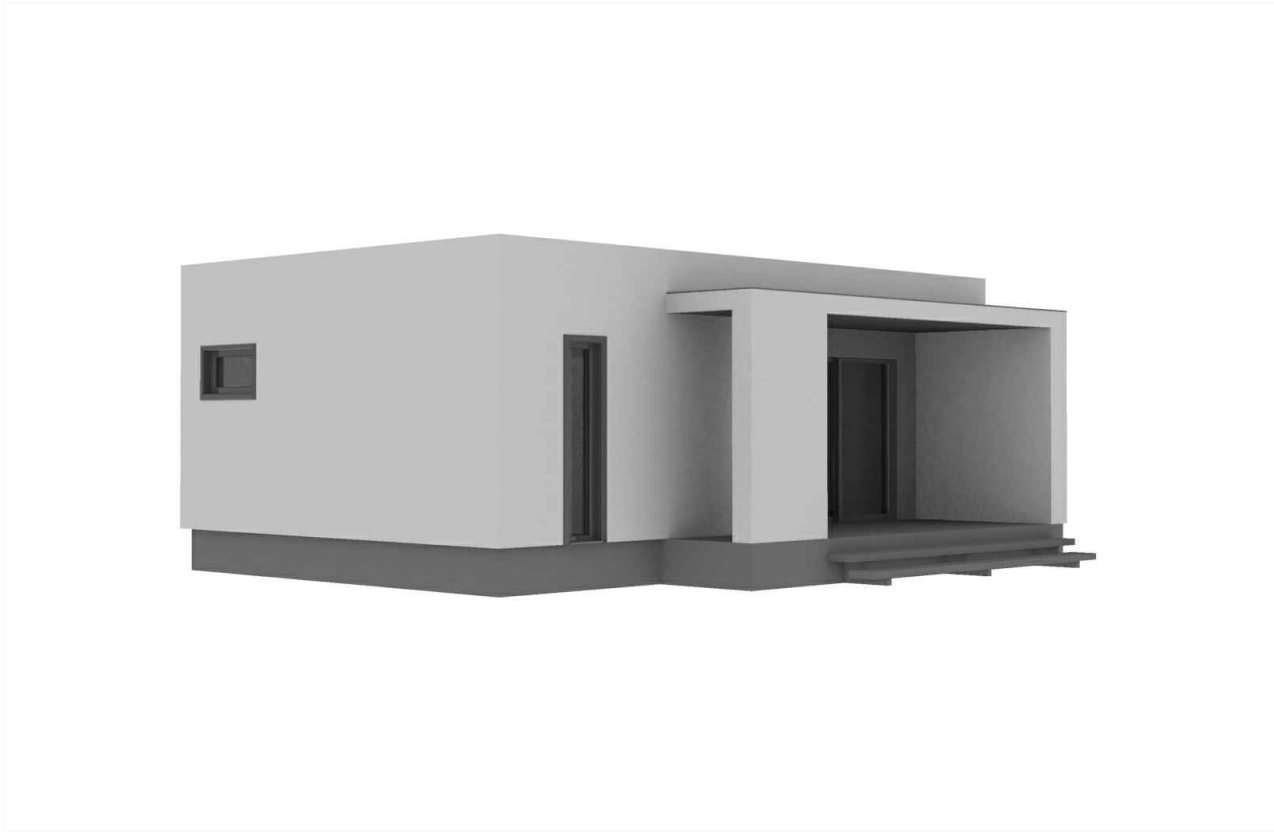
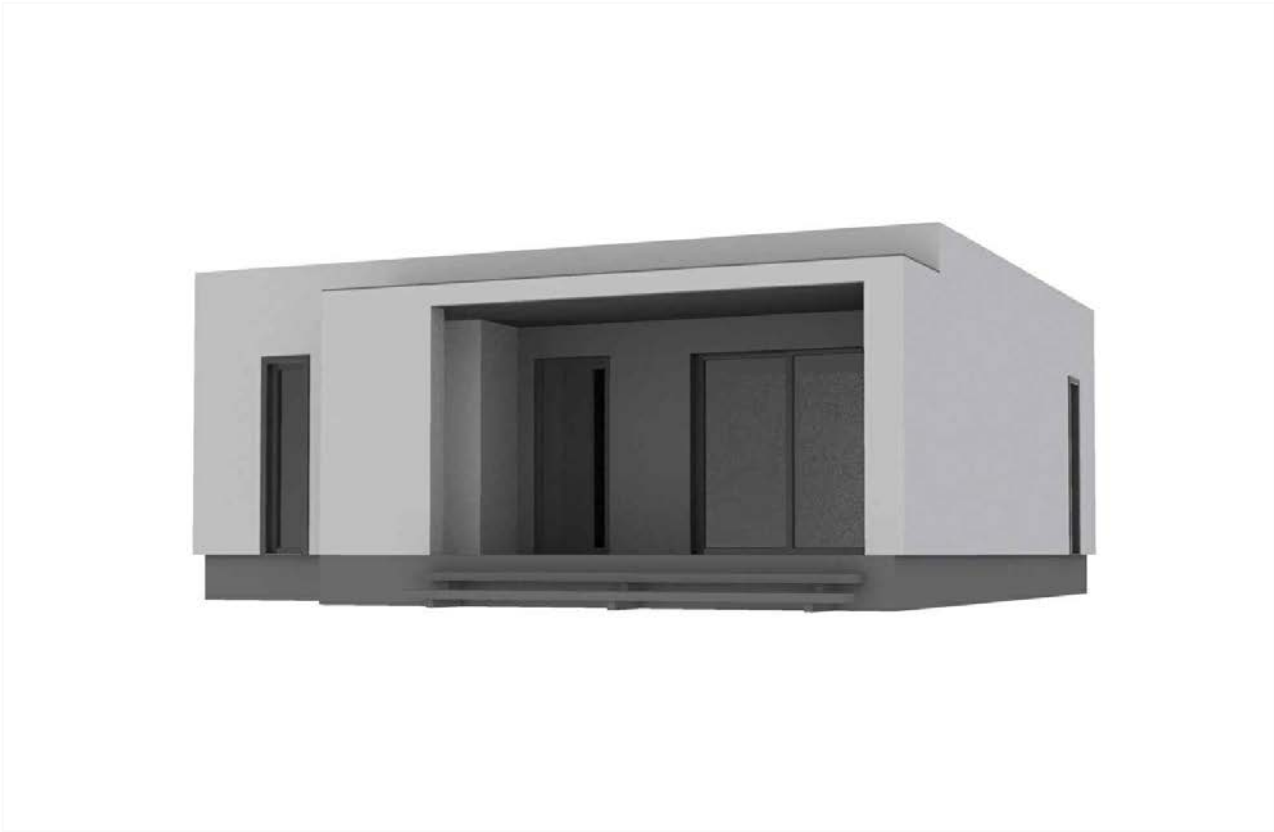
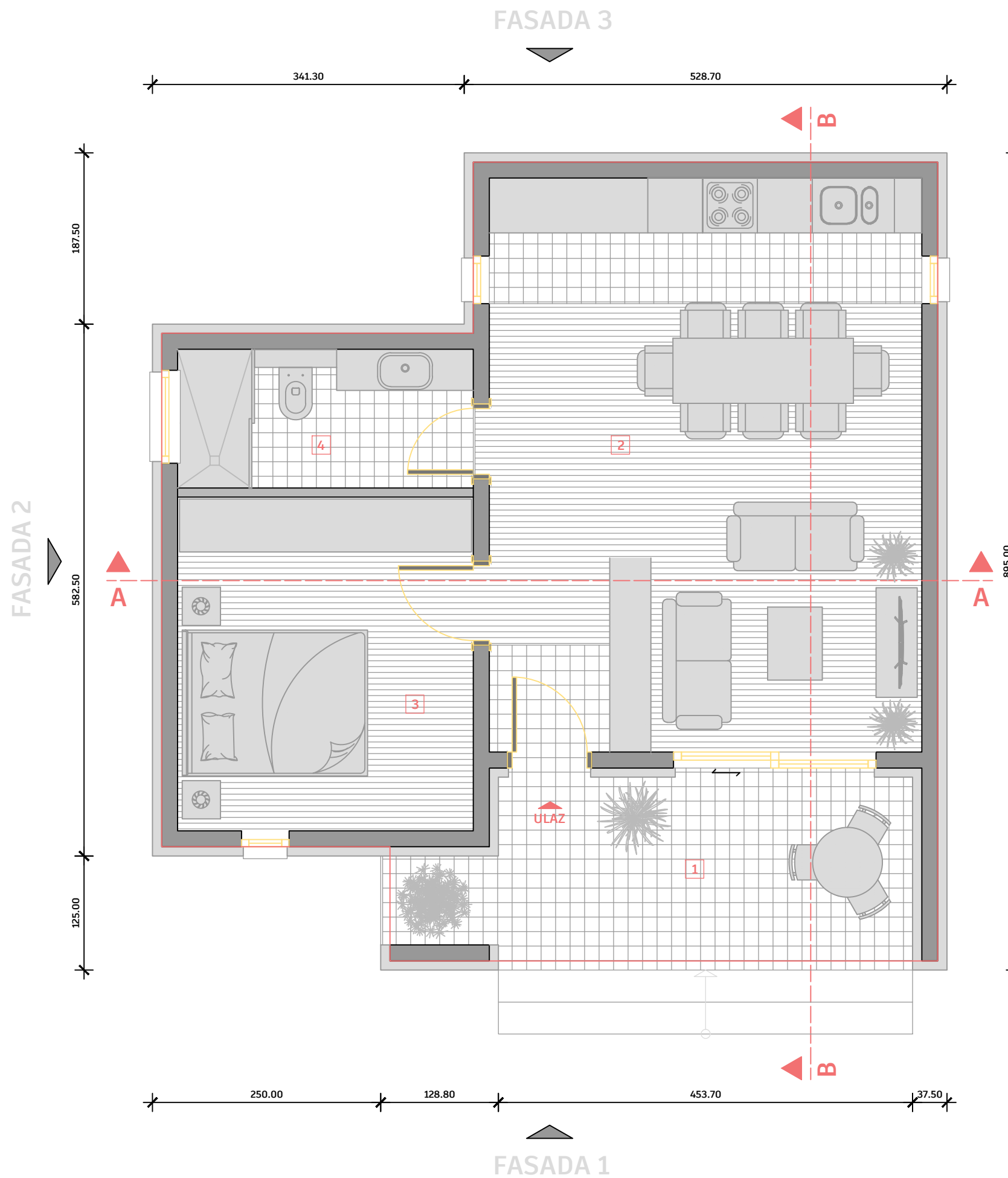


PROJEKAT BR.1 - ARHITEKTURA

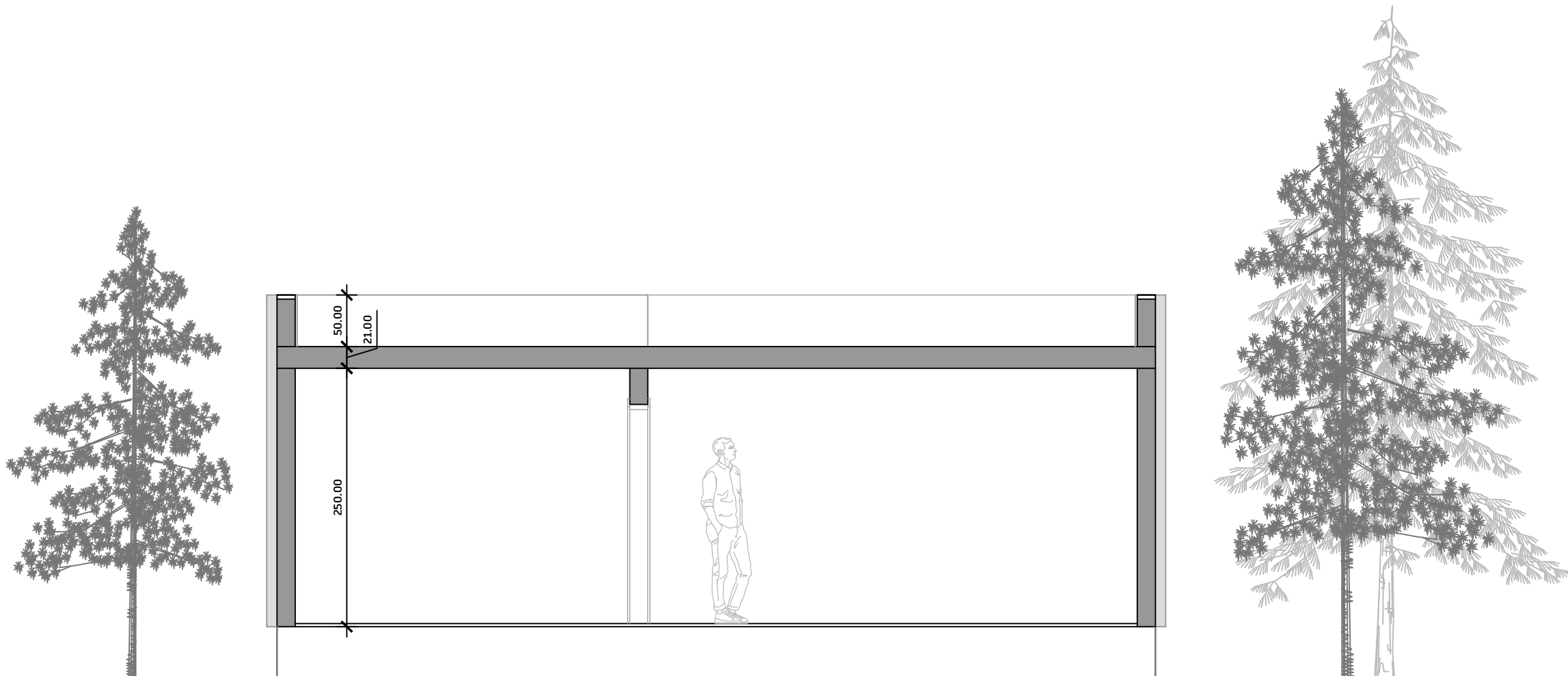




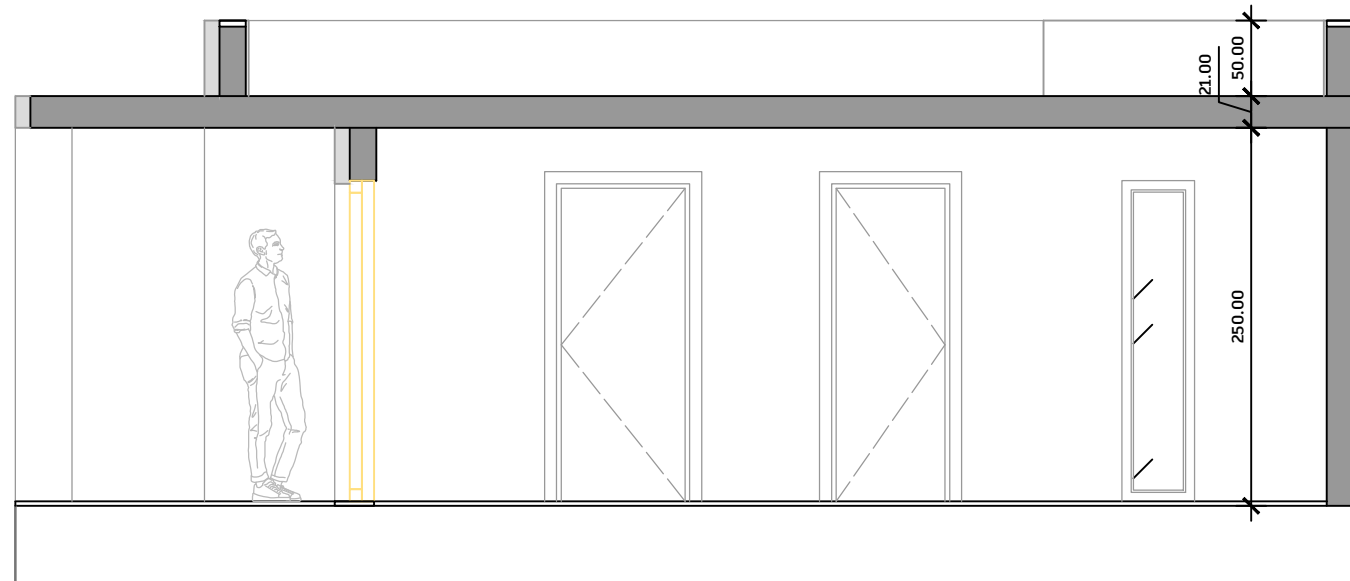
bruto površina 69,2m²

broj	prostorija	površina
1	trijem	10,8m ²
2	dn. boravak, kuh., trp.	29,8m ²
3	spavaća soba	11,8m ²
4	kupatilo	4,9m ²
	ukupno	57,3m ²

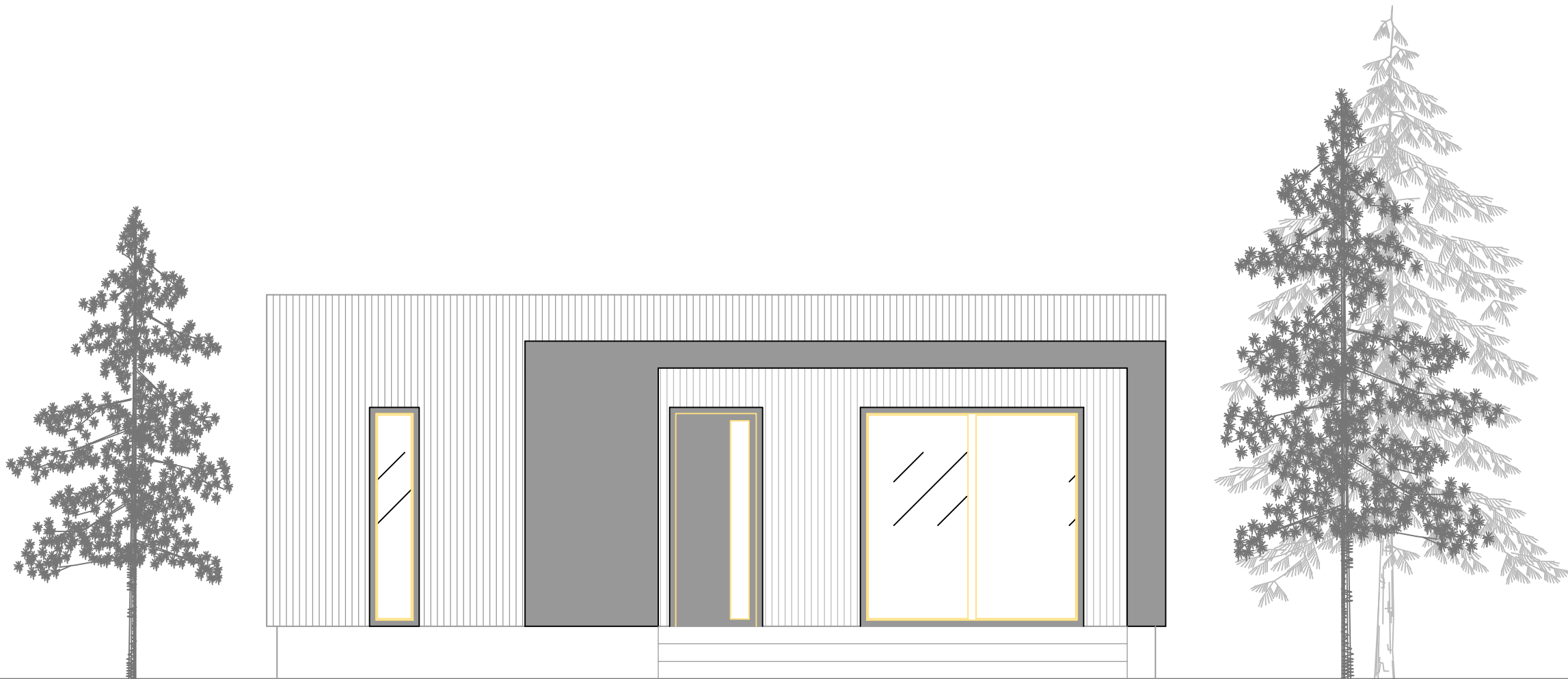
BRUTO POVRŠINA
P=68.3m²



PRESJEK A



PRESJEK B



FASADA 1

